

Hickinbotham



HOUSE & LAND

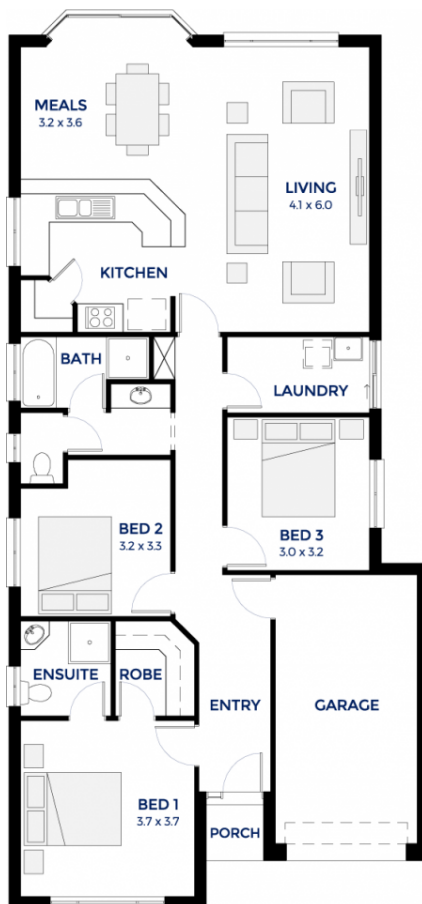
\$294,900*

LOT 1890

Golfview Drive,
Munno Para 'Playford
Alive'

BLOCK SIZE: **300.00m²**
HOUSE SIZE: **146.85m²**

TOPAZ



PACKAGE INCLUSIONS:

- Single Garage, automatic panel lift door & concrete slab
- Ducted and zoned reverse cycle air conditioning
- 2700mm high ceilings
- Carpet to bedrooms
- Wooden floating floors to the remainder
- Driveway and perimeter
- Stainless steel appliances
- Free dishwasher (No Install)
- Overhead cupboards to kitchen.
- Footing allowance included*
- Instantaneous hot water system
- Flat breakfast bar
- Colorbond roof
- Roof pitch 25 degree
- Encumbrance requirements included
- Corner pantry and store including shelves
- Walk-in robe and shelf
- Built in robes to Bedroom 2 and 3
- 1200mm high tiling (bathroom & en-suite)
- 3 rows of tiles over kitchen
- Milan semi framed shower screens to both shower alcoves
- 1 3/4 bowl sink to kitchen
- Key locks to sliding windows
- Exhaust fans
- Smoke detectors
- Custom options available*
- Choice of elevations*

ENQUIRIES: **Rohit Khanna**
M: 0413748350 E: rohitk@hickinbotham.com.au

hickinbotham.com.au

*Conditions apply. Certain elevations may not match the particular floor plan published in this package and, as such, all floor plans and elevations are for illustration purposes only. Land subject to availability. The land referred to in this promotion is not owned by us. We make no representation and, to the extent permissible at law, we disclaim all liability, as to the suitability of the land to build on, or the suitability of any house design, or otherwise. You must satisfy yourself of that by inspection, or by taking professional advice, or otherwise. Pricing is indicative only and based on standard costings. Price may vary depending on selections, engineering, council and utility requirements and adjustments to allowances. All packages subject to final council approval. Alan Hickinbotham Pty Ltd ABN 13 007 567 222, RLA 230557. Construction Services Australia Pty Ltd ABN 99 007 641 787, Building Licence G8969.

